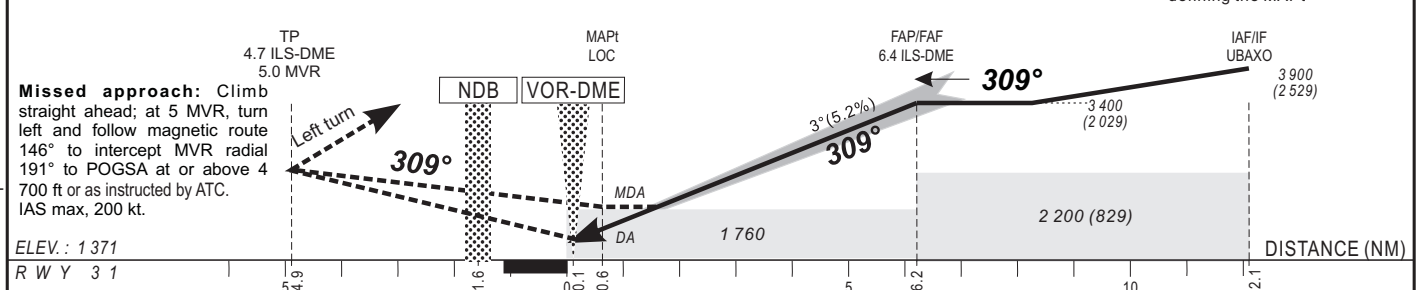


Distance to ILS-DME (NM)	6	5	4	3	2	1	Notes: - RDH is 15 m. - Timing not authorized for defining the MAPt
Altitude (ft)	3 400	3 270	2 950	2 630	2 310	2 000	



CAT	Cat. I				LOC-DME				CIRCLING (3)				RVR for take-off: CAT A - B - C : 400	
	OCA (OCH)	DA	DH	RVR(1) RVR(2)	OCA (OCH)	MDA MDH	RVR(1) RVR(2)	OCA (OCH)	MDA MDH	VIS				
A	1522 (151)	1580 (200)		700 1000	1756 (385)	1760 (390)	1200 1500	2082 (691)	2090 (700)	1500	Timing FAF / MAPt 5.6 NM			
B	1534 (163)	1580 (200)		700 1000	1756 (385)	1760 (390)	1300 1500	2082 (691)	2090 (700)	1600				
C	1542 (171)	1580 (200)		700 1000	1756 (385)	1760 (390)	1400 1800	2231 (840)	2240 (840)	2400				
D											KT MIN SEC	KT MIN SEC		
											90	3 Min 44	140	2 Min 24
											100	3 Min 22	150	2 Min 14
											110	3 Min 03	160	2 Min 06
											120	2 Min 48	170	
											130	2 Min 35	180	

Notes: (1) With approach lights - Climbing sector when Holding RAVAS is active: Between radials 124° and 031° MVR
 (2) Without approach lights - Climbing sector when holding POGSA is active: Between radials 244° and 151° MVR
 (3) Daytime only - OCH and MDH AAL.
 (**) Transition altitude: 5400 ft from QDM 058° to 228° and 4 500 ft from QDM 228° to 058°

CHANGES: First edition-Magnetic variation updated